



Career and Technical Education in Indiana

Charles R. Feldhaus, Ed.D.
Stephen Hundley, Ph.D.

Purdue School of Engineering and Technology
Indiana University Purdue University Indianapolis

[Study Design continued]

Six focus questions that were produced by various members of the Indiana Association of Area Vocational Directors (IAAVD)

1. What is the long-term impact of Indiana secondary career and technical education?
2. What is the educational attainment of Indiana career and technical graduates?
3. Is there a connection between academic achievement of the general population compared with Indiana career and technical education graduates?
4. Does career and technical education fair well in terms of drop out rates?
5. What is the evolution of career and technical education graduates to high-wage, high-demand workforce areas?
6. Is there a way to tie economic growth and future jobs to career and technical education training?

[Study Design continued]

Three research questions guide this study:

1. What evidence and data sources support the stakeholder perceptions of the academic, educational and personal impact of career and technical education?
2. What are the perceptions of the academic, educational, and personal impact of career and technical education in the state of Indiana from select stakeholders?
3. What research and information resources inform the stakeholder perceptions of the economic, educational and personal impact of career and technical education?

[Study Design]

- A telephone and mail survey was created based on the aforementioned questions from the IAAVD
- The sample for the survey was three hundred and eighteen former secondary career and technical education students that were enrolled in the year 2003 in the areas of manufacturing and processing, engineering science and technology, and health sciences certificate programs.
- The Indiana University Purdue University at Indianapolis (IUPUI) Community Learning Network Call Center completed the survey during the period from April through October of 2005 and acted as an independent agency within this study framework used for purposes of contacting members of the survey sample, gathering data via telephone interviews and reporting that data for purposes of analysis by the researchers conducting this study

[Findings:]

- The section provides information about findings concerning their perceptions of the following aspects of CTE:
 - Satisfaction with and willingness to recommend CTE
 - CTE and preparation for the future
 - Anticipation of future studies
 - Comparisons to CTE non-participants
 - CTE's impact on personal and professional life

[Demographics]

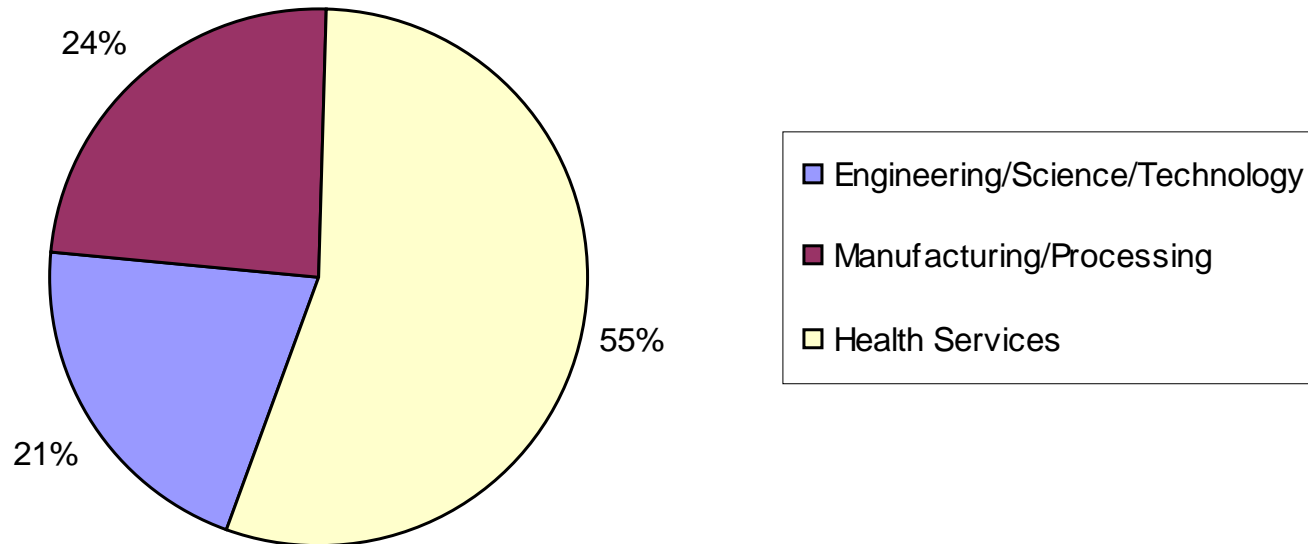
- Demographic information for the respondent universe is provided, including the following characteristics:
 - CTE program participation
 - Geographic location of respondent
 - Gender
 - Race/ethnicity
 - School enrollment status
 - Military involvement

[Charts]

- Pie charts depict percentages of respondent answers for both demographic information and specific aspects of CTE (e.g. satisfaction; preparation for the future).
- Bar charts provide the mean scores for all respondents and by CTE program for specific aspects of CTE. The range for mean scores is 4 (highly positive and/or strongly agree) to 1 (highly negative and/or strongly disagree).

Demographic Profile of Respondent

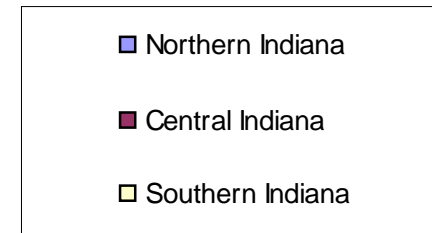
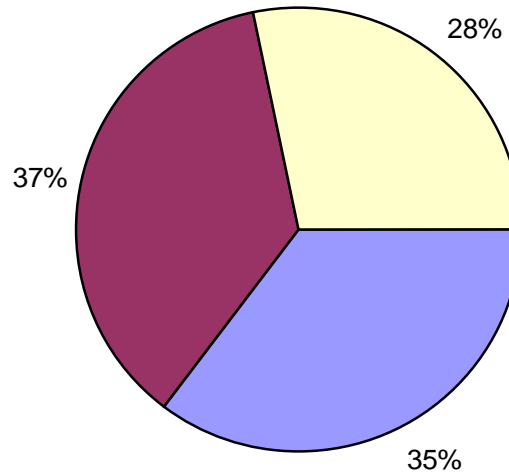
**CTE Program Participation
(Respondent Universe; n=318)**



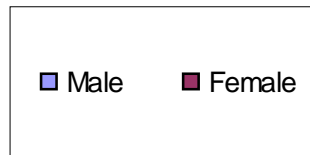
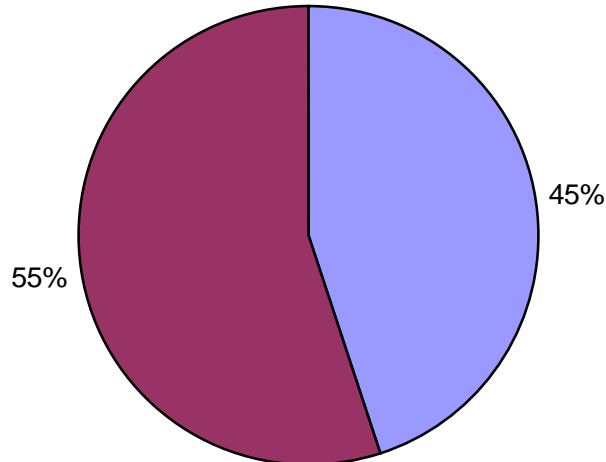
Demographic Profile of Respondent

continued

Geographic Location
(Respondent Universe; n=318)



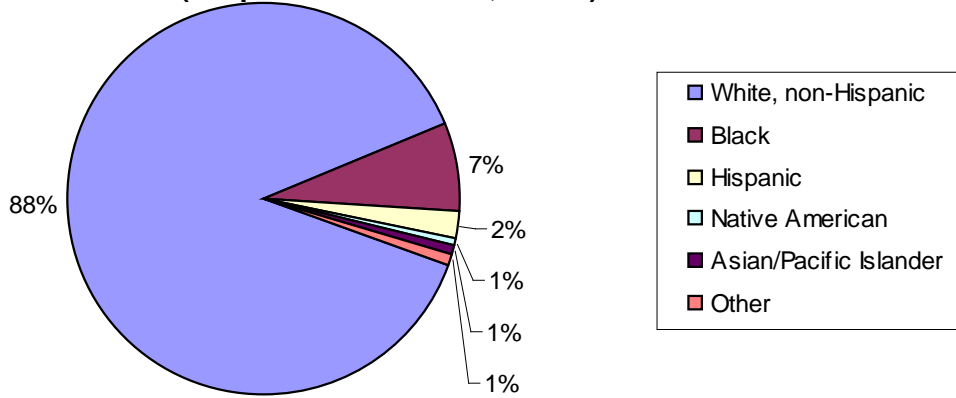
Gender
(Respondent Universe; n=318)



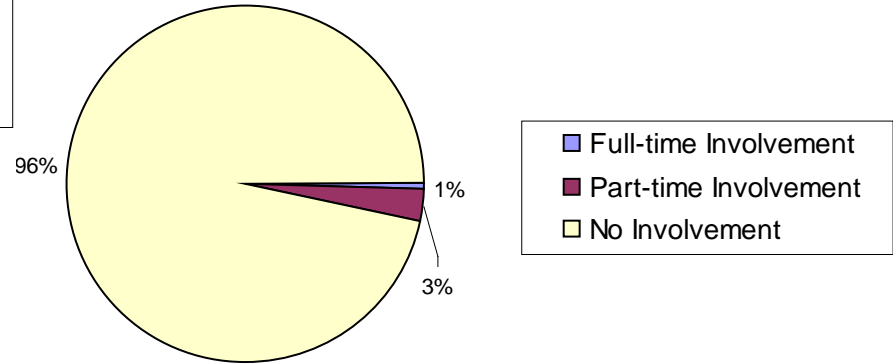
Demographic Characteristics of Respondent



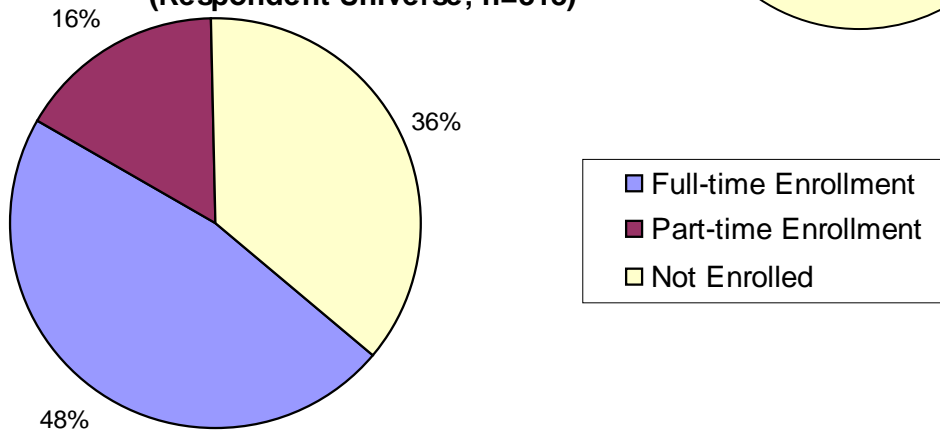
Race/Ethnicity
(Respondent Universe; n=318)



Military Involvement
(Respondent Universe; n=318)

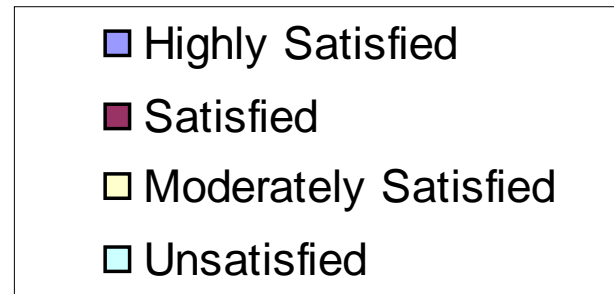
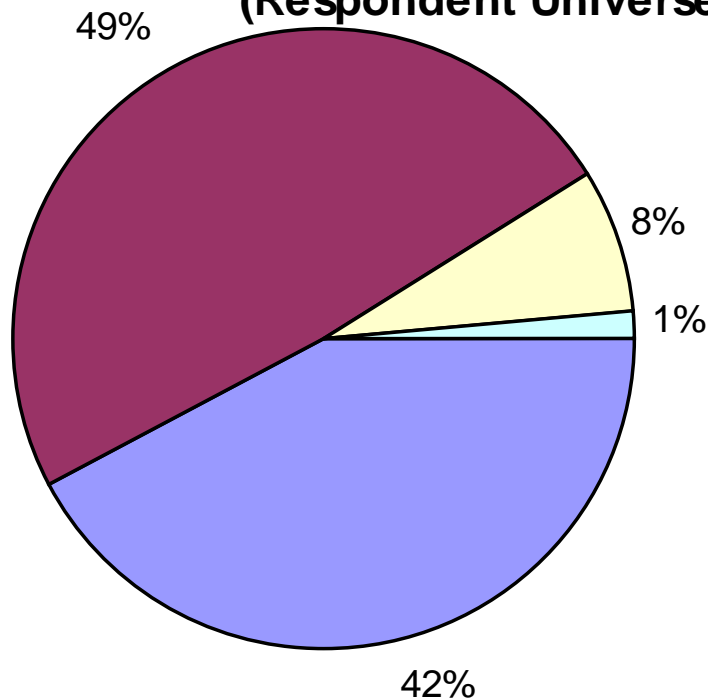


School Enrollment Status
(Respondent Universe; n=318)



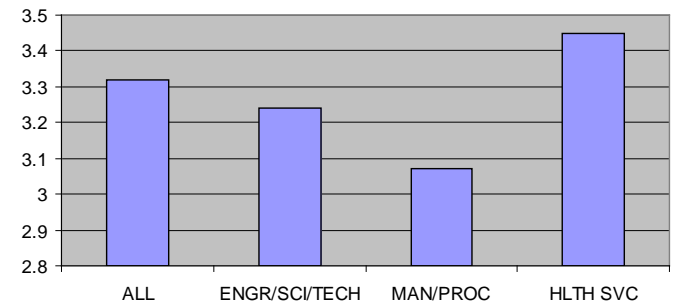
Satisfaction with and willingness to recommend CTE

Satisfaction with CTE
(Respondent Universe; n=318)



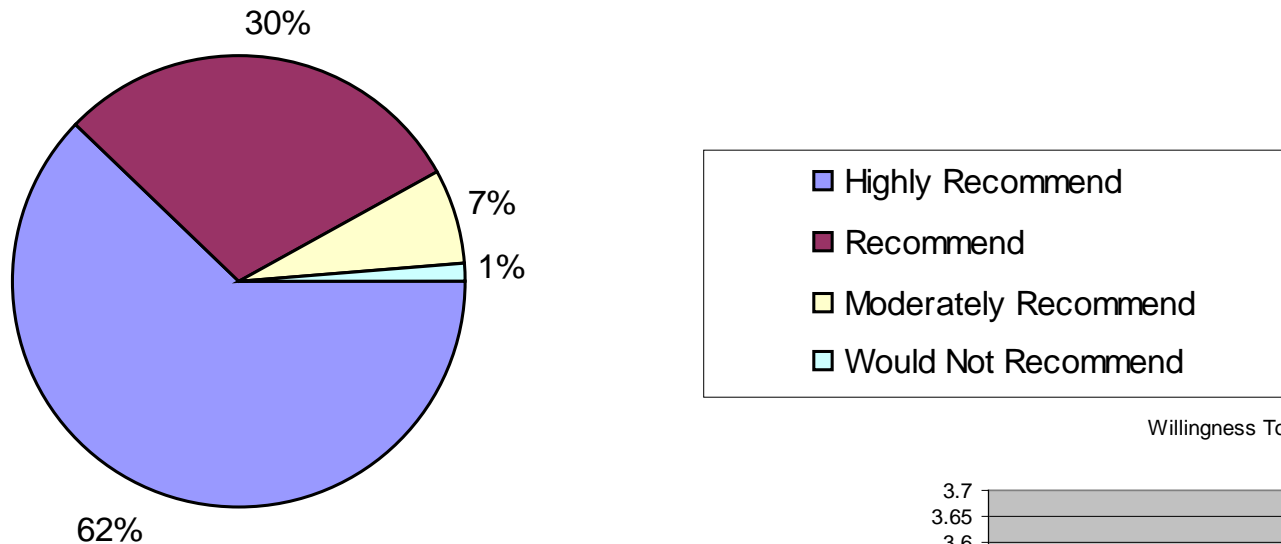
To what extent do you feel *satisfied with Career/Technical Education experiences* in which you participated?

Satisfaction With CTE

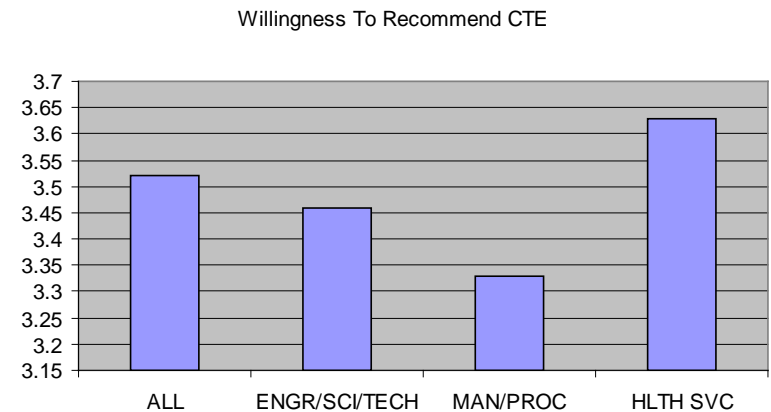


Satisfaction with and willingness to recommend CTE

**Recommend CTE to Current or Future Student
(Respondent Universe; n=318)**

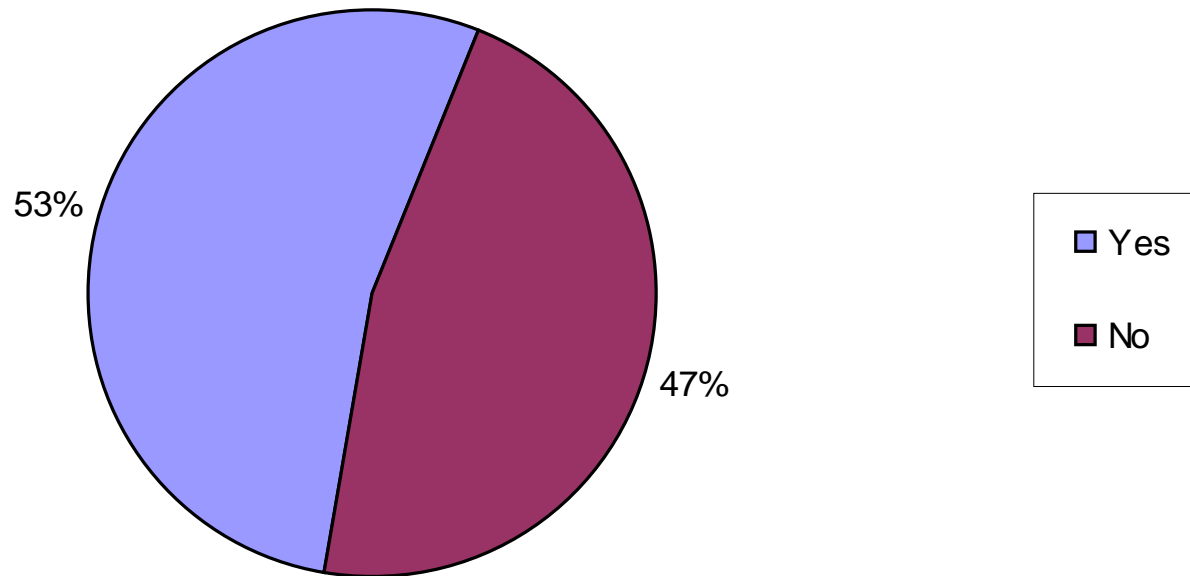


To what extent would you *recommend Career/Technical Education courses or programs* to a current or future high school student?



CTE and preparation for the future

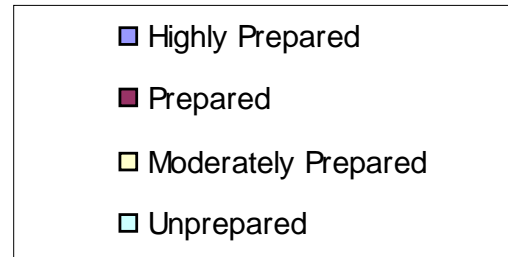
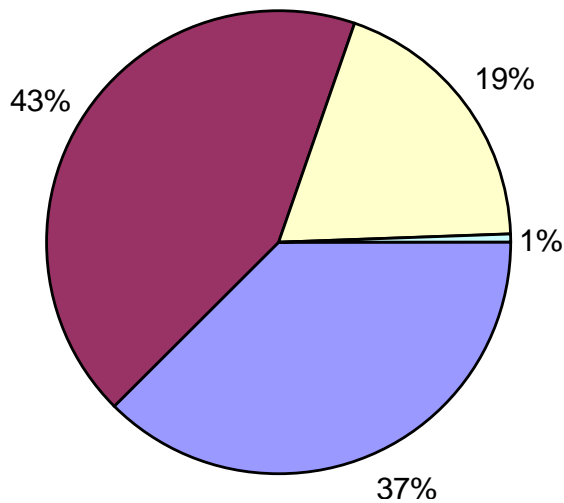
**"I Received Dual Credit/Certification For Participating in CTE"
(Respondent Universe; n=318)**



Did you *receive dual credit or certification* as a result of participating in Career/Technical Education?

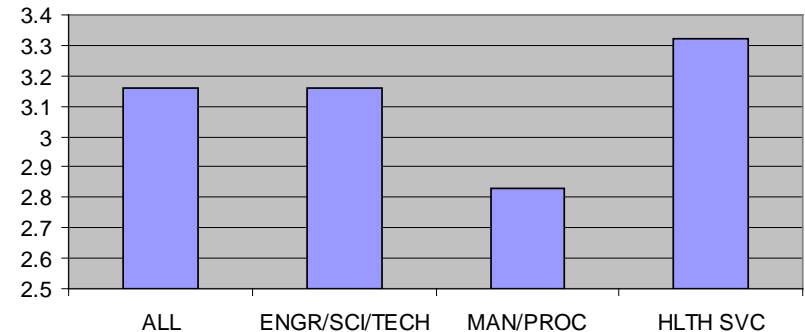
CTE and preparation for the future

CTE Provided Preparation for Continued Training in Workplace (Respondent Universe; n=318)



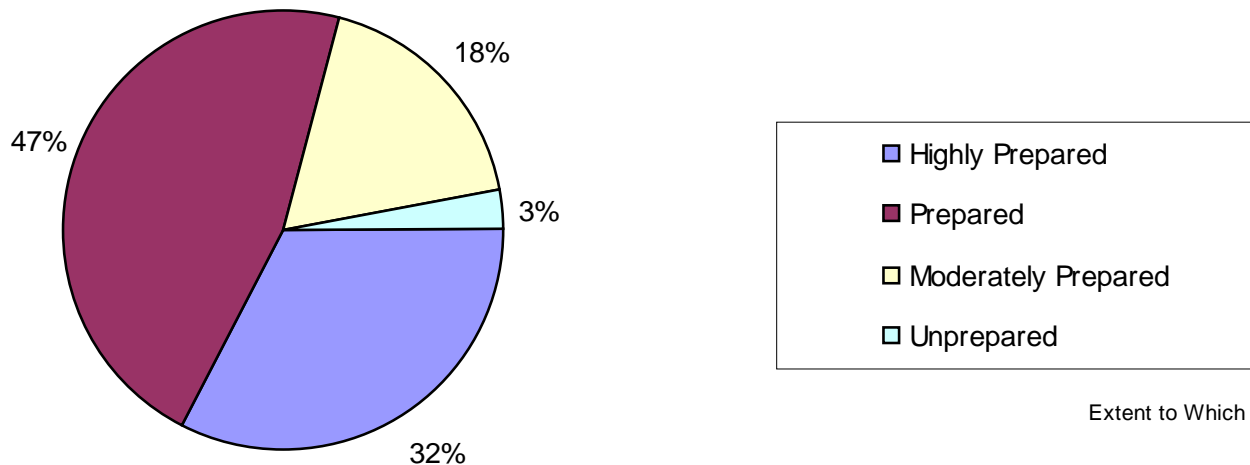
To what extent do you feel your *Career/Technical Education* provided preparation for continued training in the workplace (or similar environment)?

Extent to Which CTE Provided Preparation for Training in Workplace



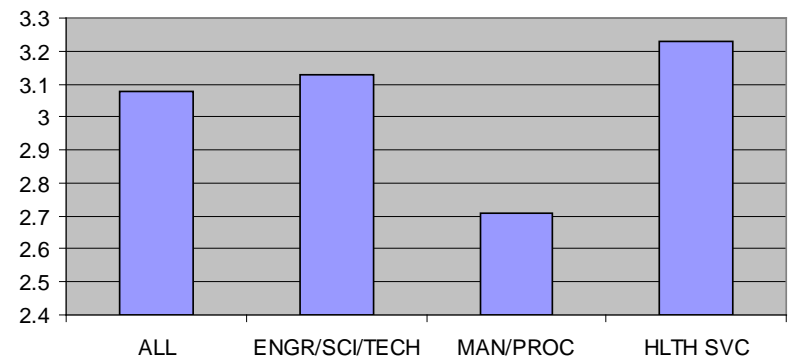
CTE and preparation for the future

CTE Provided Preparation for Enrollment in Higher Education
(Respondent Universe; n=318)



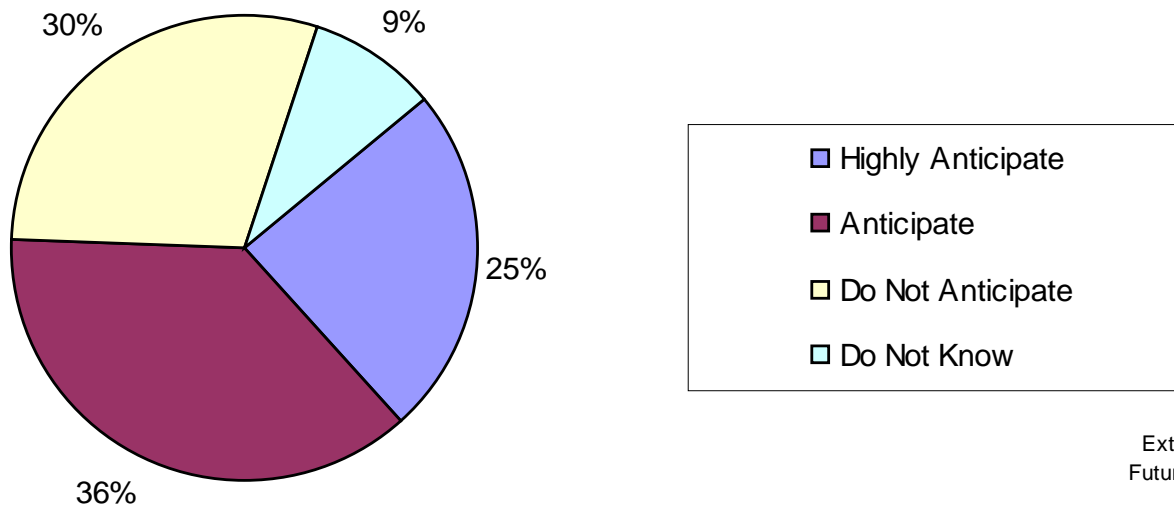
To what extent do you feel your *Career/Technical Education* provided preparation for enrollment in higher education (community college or four-year college/university)?

Extent to Which CTE Provided Preparation for Higher Education



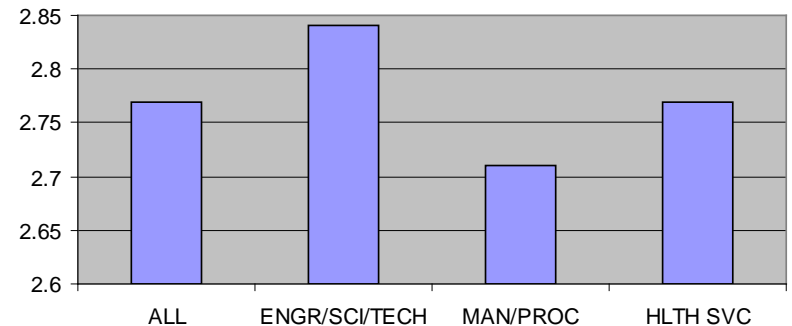
CTE and preparation for the future

Anticipate Future Training/Cont. Educ. Related to CTE
(Respondent Universe; n=318)



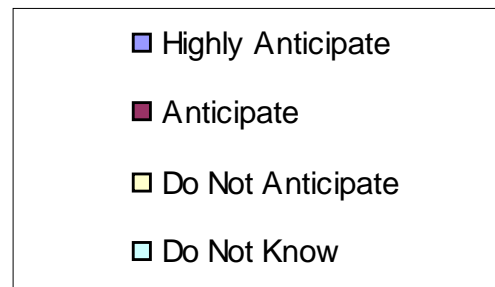
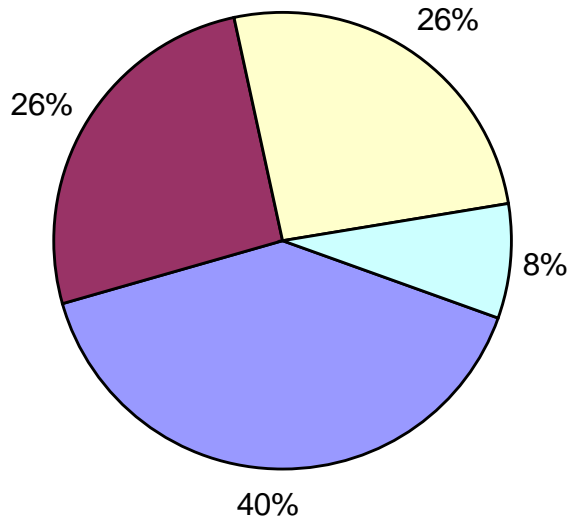
To what extent do you *anticipate future enrollment in training or continuing education (NOT including college or university courses or programs) related to Career/Technical Education experiences* in which you participated?

Extent to Which Respondent Anticipates Future Training/Cont. Educ. Related to CTE



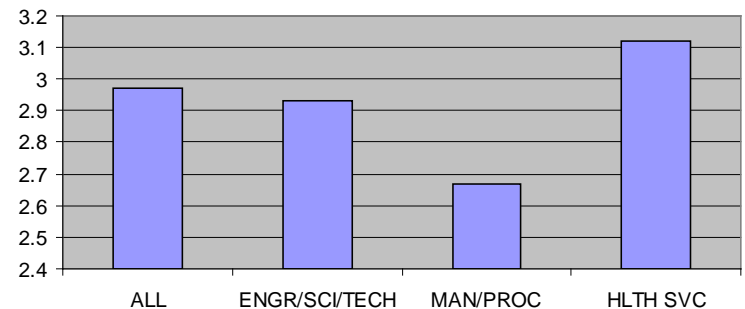
CTE and preparation for the future

Anticipate Future Higher Education Related to CTE (Respondent Universe; n=318)



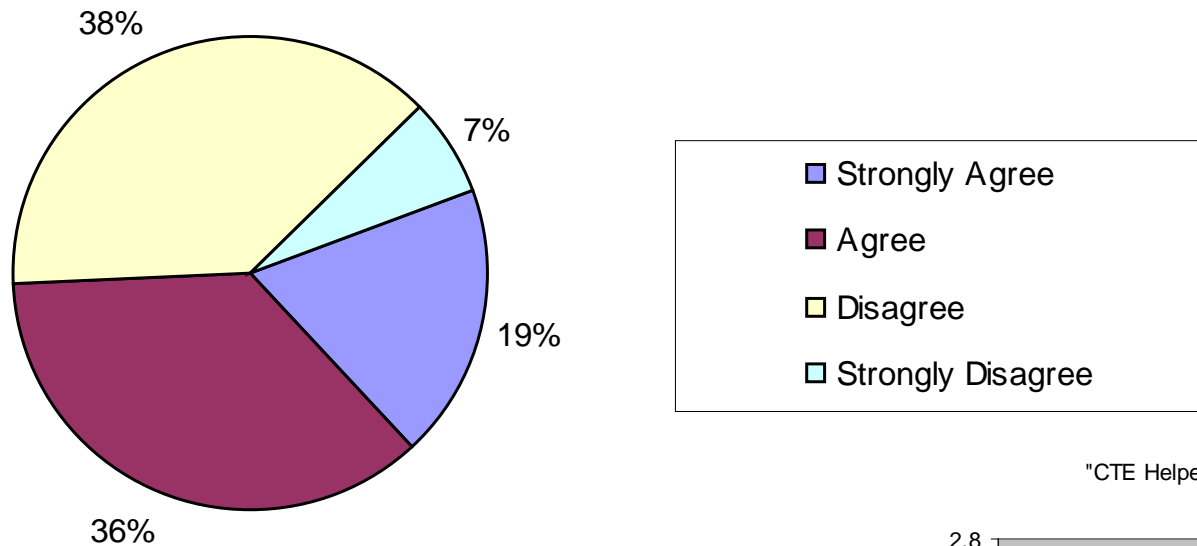
To what extent do you *anticipate future enrollment in a college or university course or program related to Career/Technical Education experiences in which you participated?*

Extent to Which Respondent Anticipates Future Higher Education Related to CTE



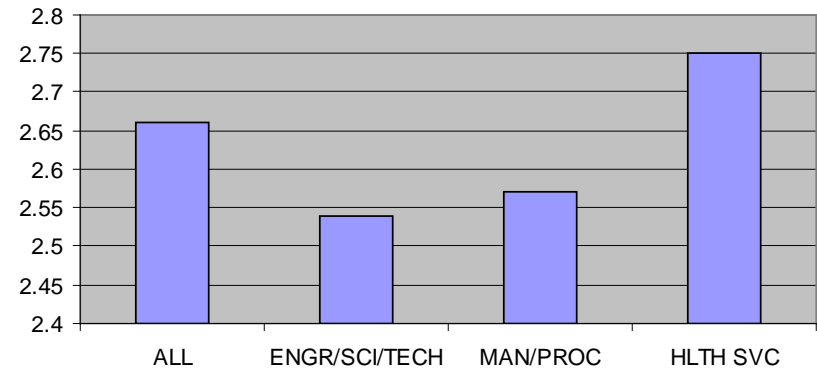
CTE and preparation for the future

"CTE Helped Me Decide On A College To Attend"
(Respondent Universe; n=318)



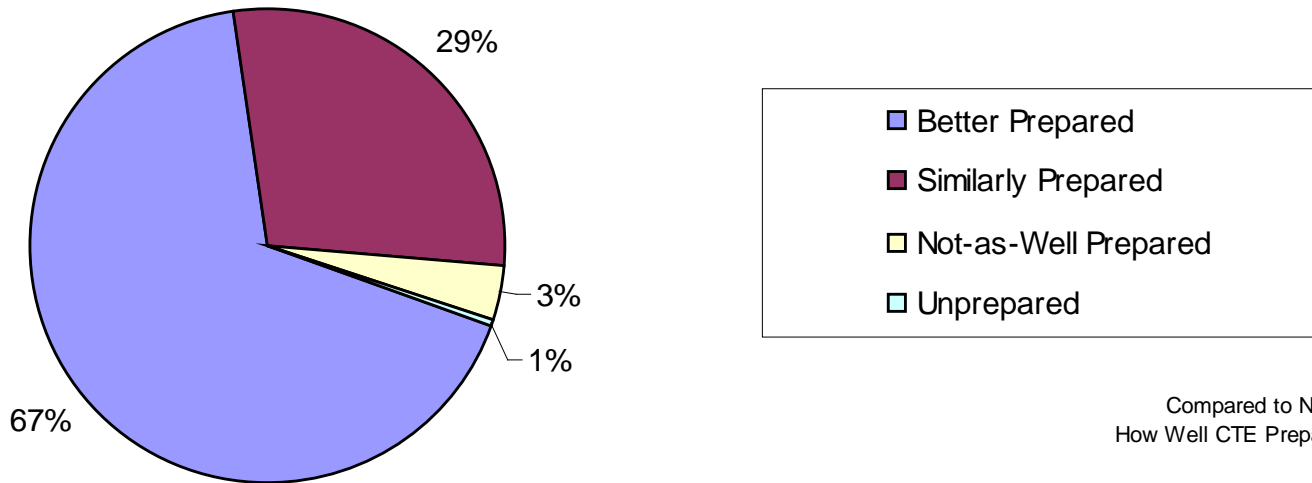
Career/Technical Education helped me decide on a college to attend.

"CTE Helped Me Decide On A College To Attend"



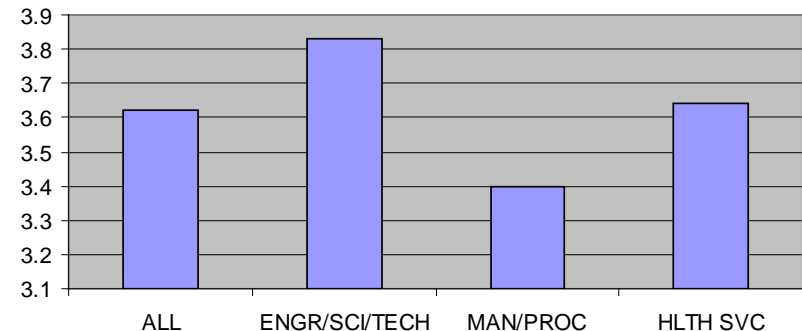
Comparisons to CTE non-participants

Compared to Non-participants,
How Well CTE Prepared for Employment
(Respondent Universe; n=318)



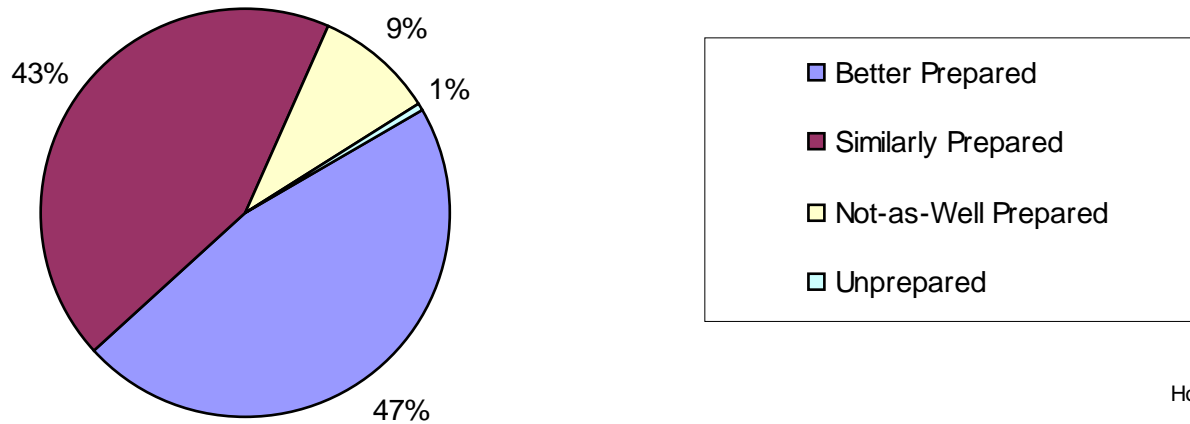
Compared to others who did not participate in Career/Technical Education, *how do you feel Career/Technical Education prepared you for employment?*

Compared to Non-participants,
How Well CTE Prepared for Employment



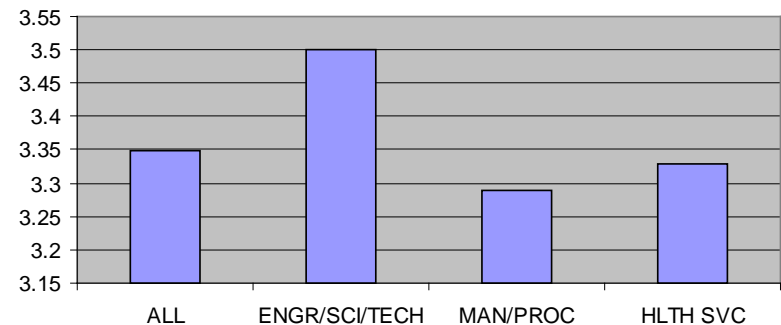
Comparisons to CTE non-participants

Compared to Non-participants,
How Well CTE Prepared for Higher Education
(Respondent Universe; n=318)



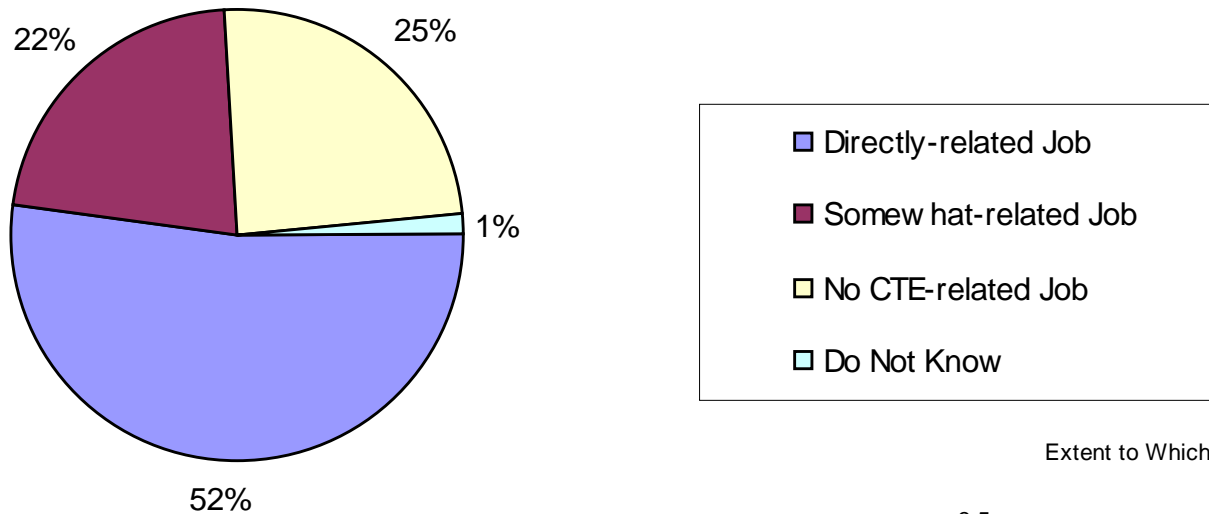
Compared to others who did not participate in Career/Technical Education, how *do you feel Career/Technical Education prepared you for enrollment in higher education* (community college or four-year college/university)?

Compared to Non-participants,
How Well CTE Prepared for Higher Education



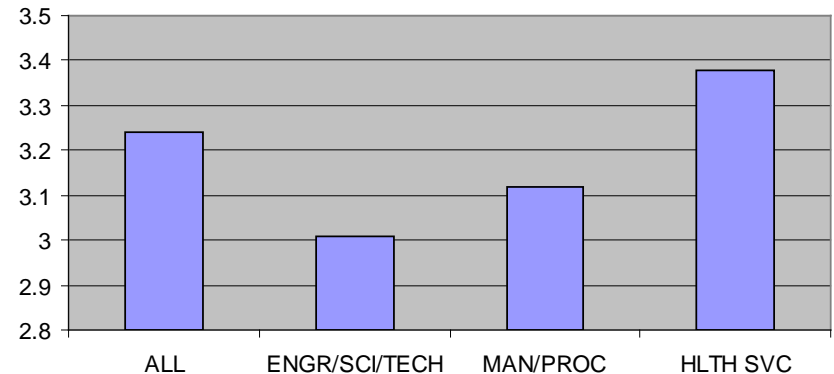
CTE's impact on personal and professional life

**Presently Working in Job Related to CTE
(Respondent Universe; n=318)**



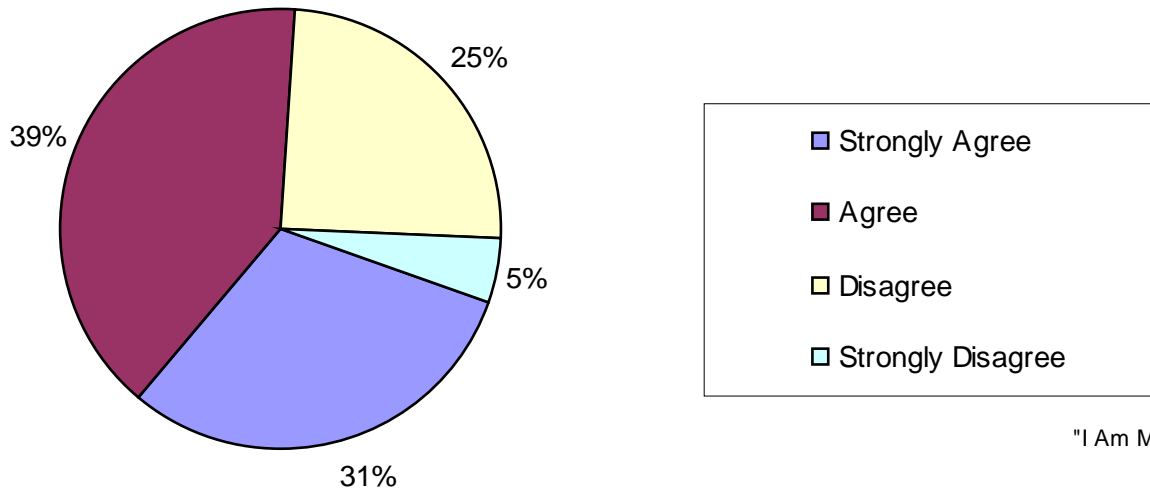
To what extent are you *presently working in a job related to Career/Technical Education* experiences in which you participated?

Extent to Which Respondent is Presently Working in CTE Job



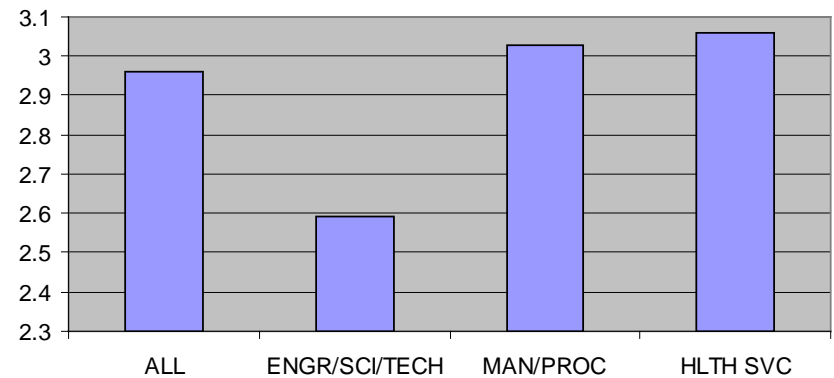
CTE's impact on personal and professional life

"I Am Making More Money Than If I Had Not Taken CTE"
 (Respondent Universe; n=318)



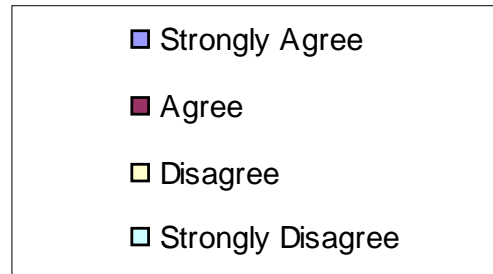
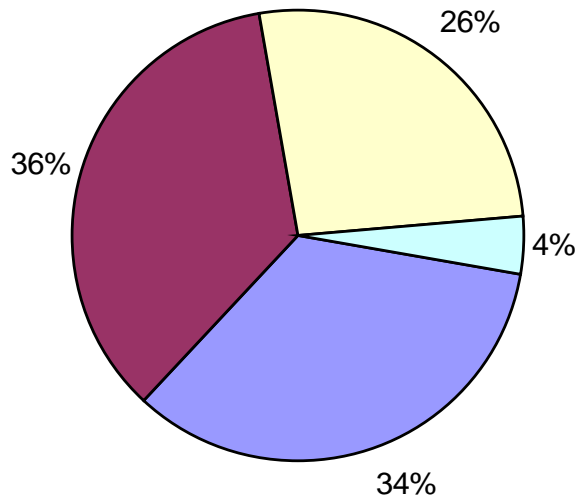
I am making more money than I would be if I had not taken Career/Technical Education.

"I Am Making More Money Than If I Had Not Taken CTE"



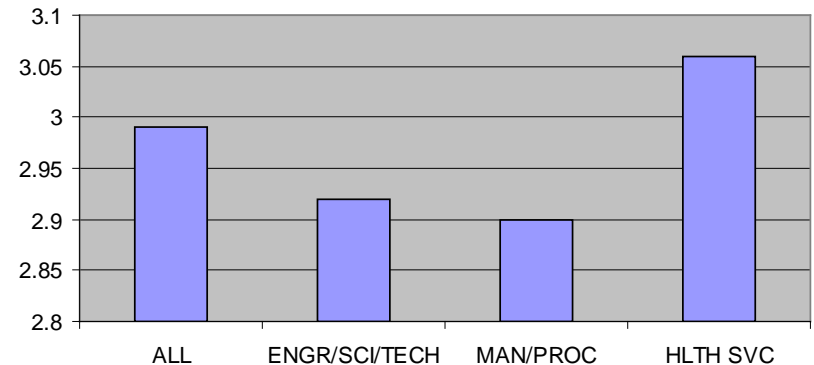
CTE's impact on personal and professional life

"It Would Have Been Harder To Have Gotten A Job Without CTE"
(Respondent Universe; n=318)



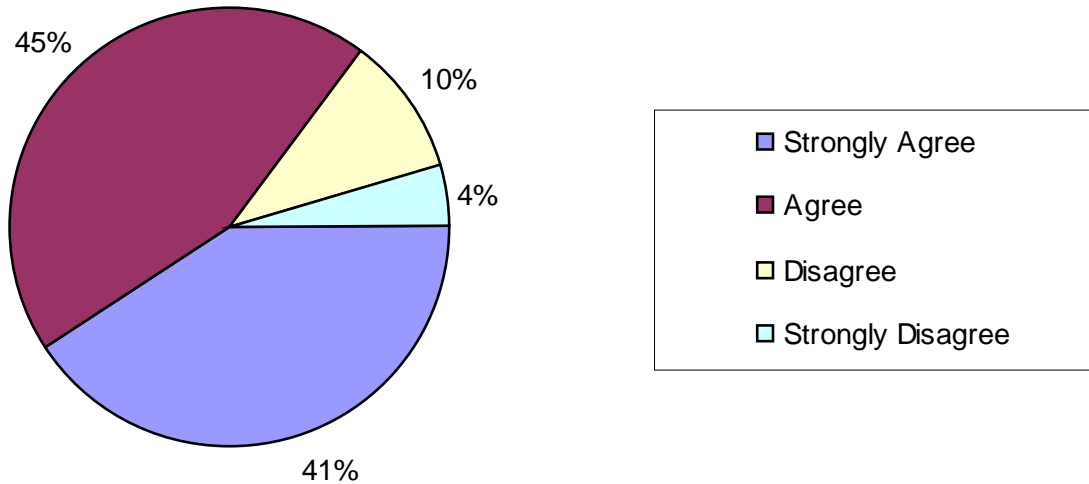
It would have been harder for me to have gotten a job if it had not been for Career/Technical Education.

"It Would Have Been Harder To Have Gotten A Job Without CTE"



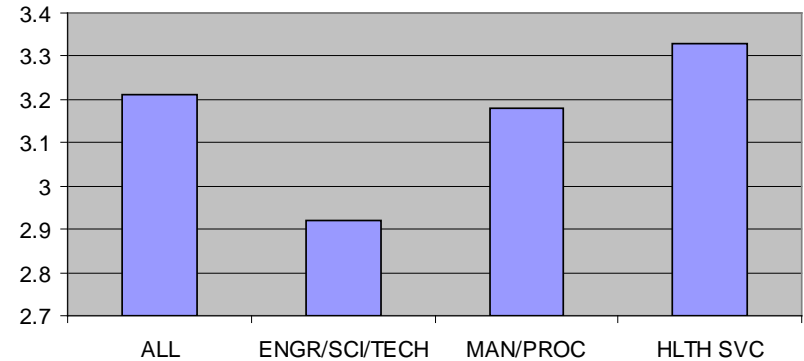
CTE's impact on personal and professional life

"CTE Helped Me Discover A Career Direction"
(Respondent Universe; n=318)



Career/Technical Education helped me to discover a career direction.

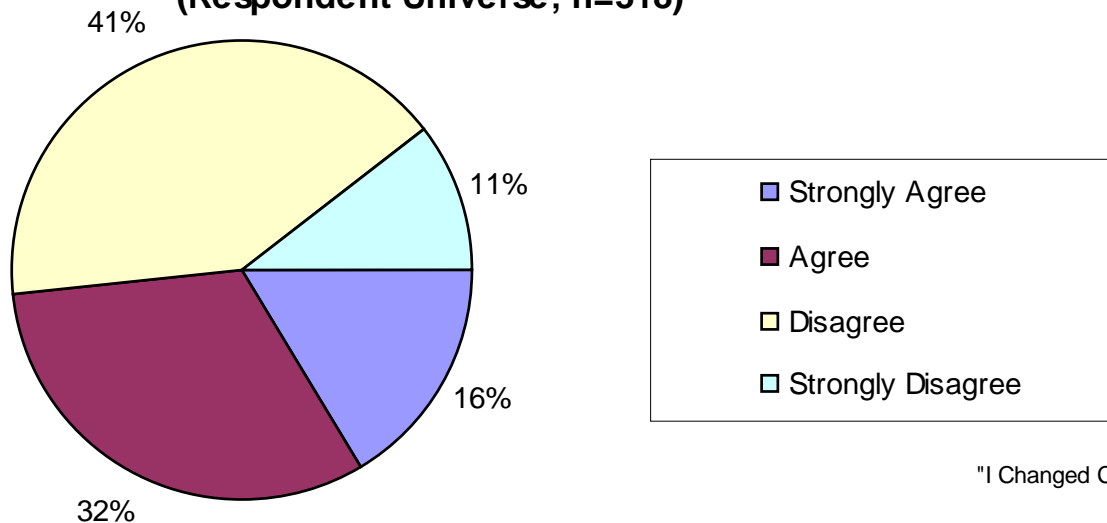
"CTE Helped Me Discover A Career Direction"





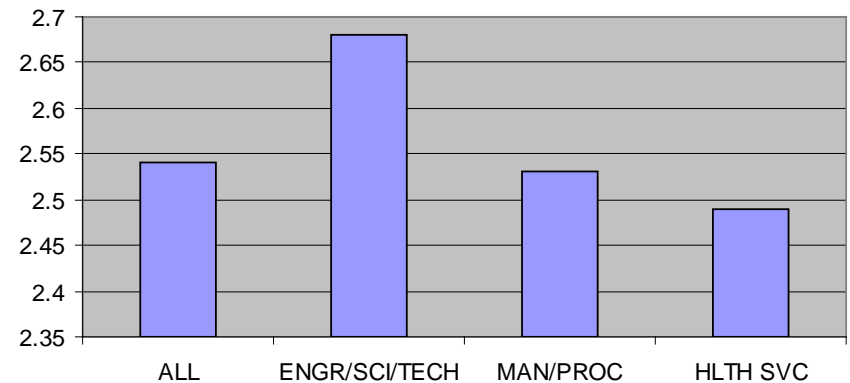
CTE's impact on personal and professional life

"I Changed Career Decisions/Directions Based on CTE"
(Respondent Universe; n=318)



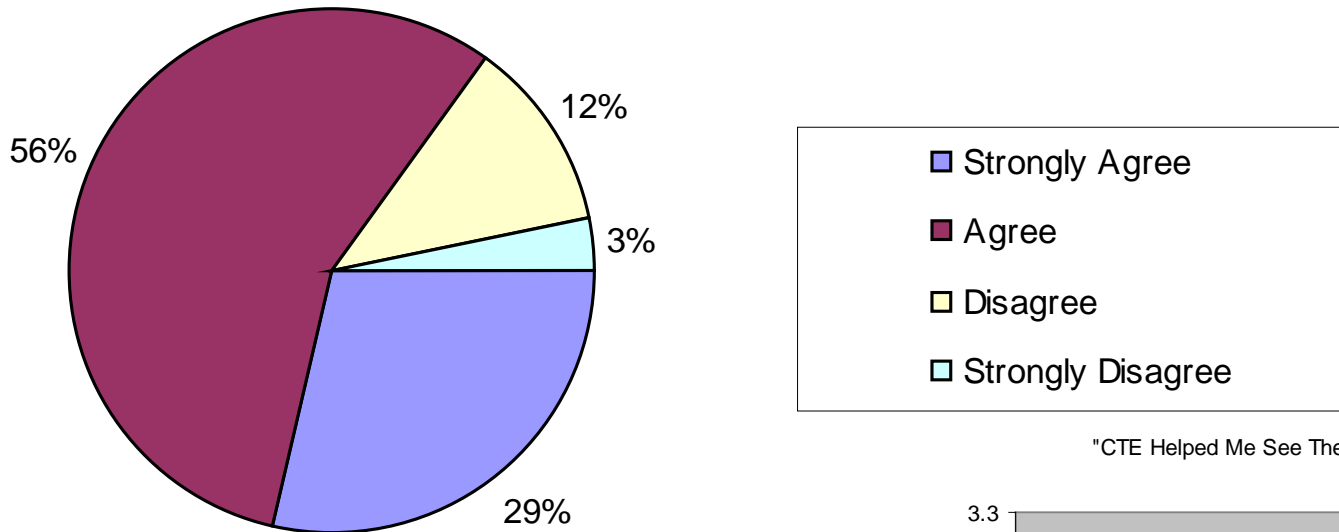
I changed career decisions or directions based on Career/Technical Education.

"I Changed Career Decisions/Directions Based On CTE"

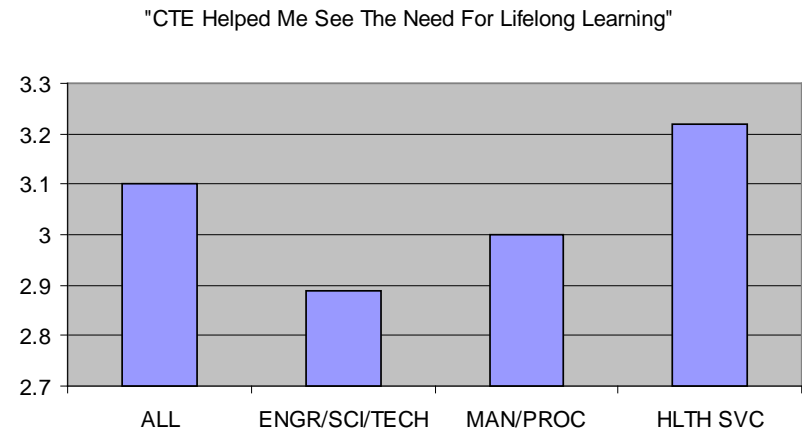


CTE's impact on personal and professional life

"CTE Helped Me See The Need For Lifelong Learning"
(Respondent Universe; n=318)

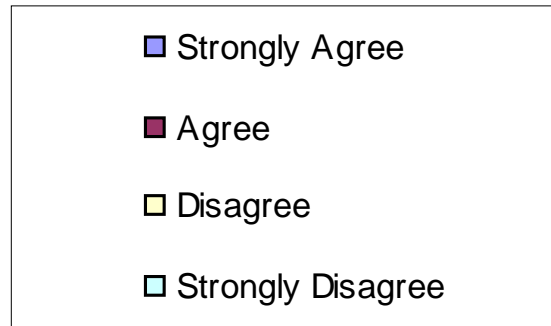
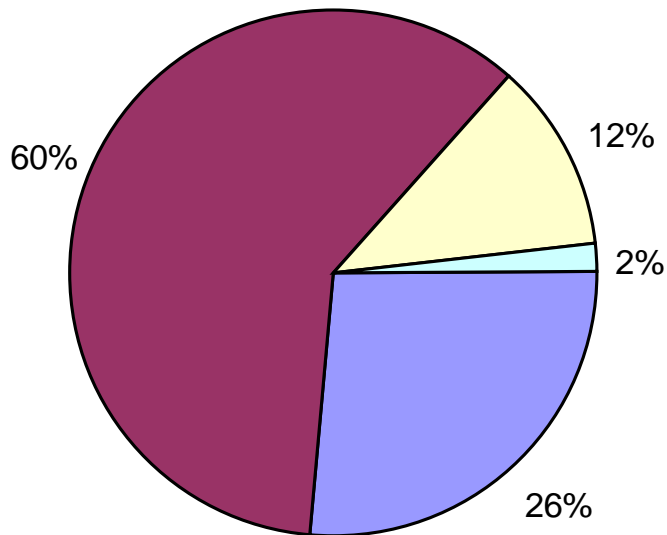


Career/Technical Education helped me see the need for lifelong learning.



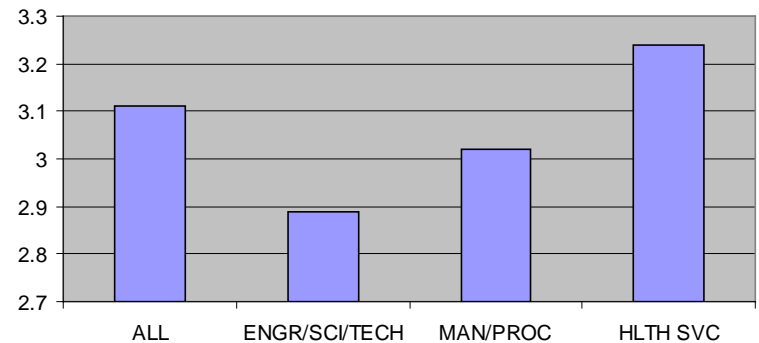
CTE's impact on personal and professional life

"CTE Has Enhanced My Overall Quality-of-Life"
(Respondent Universe; n=318)



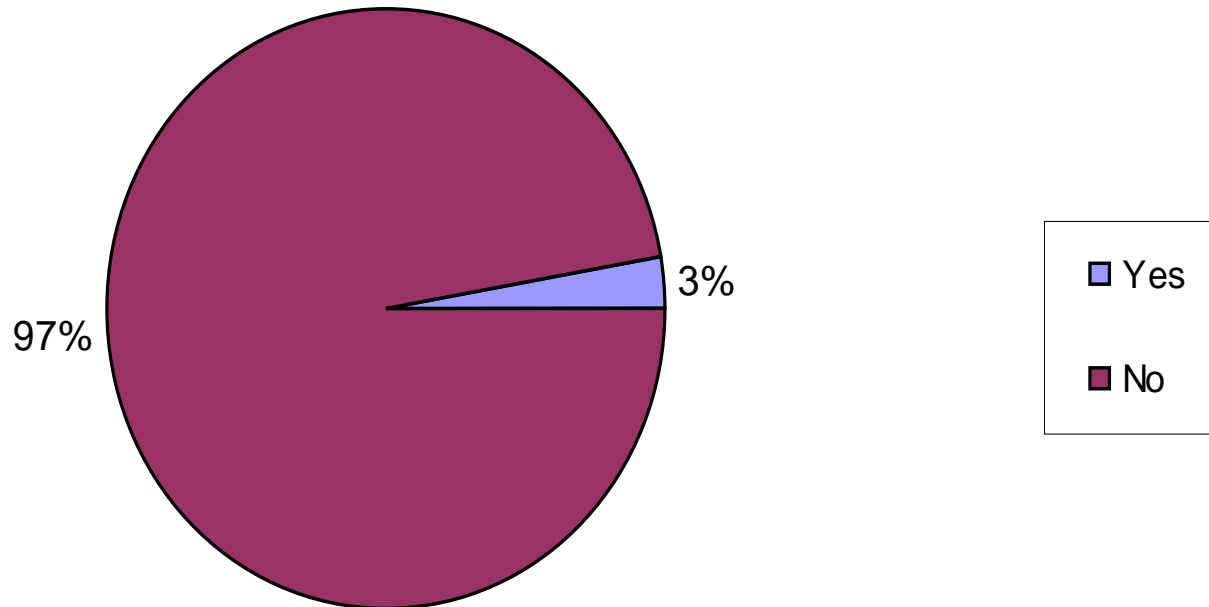
Career/Technical Education has enhanced my overall quality-of-life

"CTE Enhanced My Overall Quality-of-Life"



CTE's impact on personal and professional life

**"I Would Have Dropped Out Of H.S. If Not For CTE"
(Respondent Universe; n=318)**



I would have possibly dropped out of high school if it was not for Career/ Technical Education.

Recommendations for IAAVD

- 1. Develop a longitudinal study that seeks to measure the effectiveness of CTE in Indiana**
- 2. Demonstrate to employers the value-added nature of CTE courses, programs, and curricula**
- 3. Educate parents and other stakeholders about the benefits CTE has on preparing students for post-high-school roles of worker, college student, and community member**
- 4. Disseminate information and create excitement among current students and recent graduates about the benefits and opportunities of CTE**
- 5. Promote the economic development advantages – for individuals, employers, and communities – that CTE provides**